

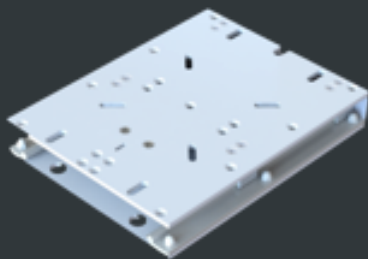


Electric Seat Slides Showcasing at IBEX, Booth 3-1431

We are excited to unveil our new line of [Electric Seat Slides](#) at IBEX! With models available for helm chairs and benches in a variety of widths, each slide features 5" of travel distance and can be stopped anywhere between its fully extended and retracted positions.

[LEARN MORE](#)

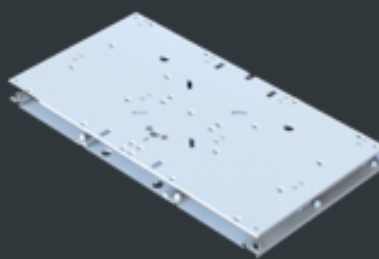
M20-1013E
13-1/8" X 10"



Ideal for seats 23" to 28".

[LEARN MORE](#)

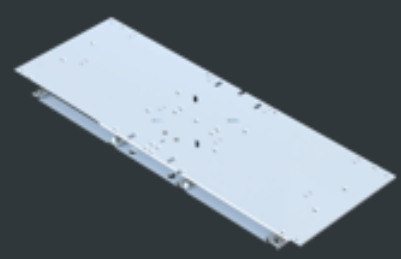
M20-2413E
13-1/8" X 24"



Ideal for seats 29" to 40".

[LEARN MORE](#)

M20-3613E
13-1/8" X 36"



Ideal for seats 41" to 54".

[LEARN MORE](#)

- Features 5" of travel distance (stroke length)
- Meets H31 testing standards for seat applications
- Water-resistant IP66 rating
- Precision-machined 6000-series aluminum chassis
- Rail/Linear Glide system are self-lubricating, dirt resistant, quiet, corrosion free, light weight and shock resistant
- Low profile with secure fit with universal mounting bolt pattern on both pedestal and box applications
- Quiet operation $\leq 58\text{dB}$
- Electric actuator
- Self-locking at any given position (at rated loads)
- No racking in any direction due to precision tolerances in the track/glide system
- All electric seat slides and components are acid etched clear anodized
- Made in the USA
- 3-year limited warranty

TACO team members will be on-hand during the show to answer questions about our line of Electric Seat Slides and all products on display. **Come see us in booth 3-1431!**



Copyright © 2021 TACO Metals, LLC, All rights reserved.

Our mailing address is:
50 N.E. 179th Street
Miami, FL. 33162

Want to change how you receive these emails?
You can [update your preferences](#) or [unsubscribe from this list](#).